

The logo for CANTÉK, featuring the brand name in a stylized, italicized font with a horizontal line through the middle of the letters, all contained within a white rectangular border.

HR300PBX

TILTING BED HORIZONTAL BAND RESAW



HR300PBX | TILTING BED HORIZONTAL BAND RESAW

High production horizontal resaw with tilting bed for bevel siding and more.

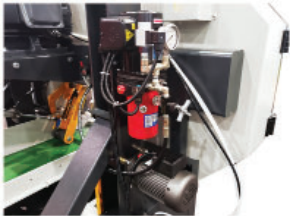
The Cantek HR300PBX tilting bed horizontal band resaw is industrially built for demanding resawing applications. The bed can be tilting from 0–45° making it ideal for bevel siding, moulding blanks, or millwork components. Capable of feeding up to 12" x 12" timber and cutting up to 10" thick. The powerful 30HP saw motor has a variable feed control allowing you to match the cutting speed to your blade & application requirements. The HR300PBX runs a 2" wide blade which runs on solid steel band wheels which are precision machined and balanced for a smooth cutting action. The precision sandwich style blade guides ensure the blade runs true for optimum cutting results. The thickness is conveniently adjusted using a precision motorized digital thickness control.



Urethane feed conveyor



Pneumatic top hold down pressure rollers



Air over oil hydraulic blade tensoning system



Mobile control panel



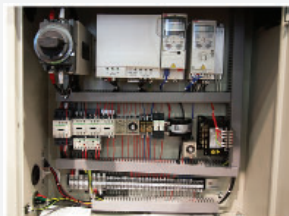
45 degree tilt



Solid steel bandwheels



Feed motor



Electrical panel

Key Advantages.

- Manually tilting feed belt for straight of bevel cutting from 0 – 45°
- Powerful 30HP saw wheel motor with variable speed inverter for precise blade speed setting according to your needs
- Heavy-duty tubular steel frame
- Motorized thickness (blade height) adjustment with digital position readout
- Hydraulic blade tensoning for optimum cutting results
- Precision sandwich style saw guide system with moveable left guide to move as close as desired to the material being cut for improved cut accuracy
- Air mist blade cooling system
- Mobile control panel with digital thickness control, ammeter, feed speed display can be positioned where the operator desires
- Solid steel saw wheels – precision machined and balanced
- Pneumatic pressurized top hold down rollers on feed conveyor
- Heavy-duty infeed guide-fence on conveyor right including holdover system
- Idle roller return conveyor to return parts required additional machining
- Reinforced urethane conveyor belt for positive feeding and long life including
- Variable feed speed by VFD (frequency inverter)
- Smooth infeed system (limit switch & timer 1 to 3 seconds) with timed pressure roller

Specifications.

Max. workpiece size	12" x 12"
Distance from blade to conveyor	0.157" – 9.8"
Conveyor belt size	11.2" x 215"
Machine wheel dimensions	711 x 50 mm
Main motor (Resaw wheels)	30 HP
Conveyor motor	3 HP
Blade elevation motor	¼ HP
Variable feed speeds	0~45 m/min
Dust hood diameter	4" x 2
Saw blade size (Normal)	188" x 2"
Feed belts – bed angle	0 ~ 45°
Voltage – Stock machine	460/3/60 electrics Total full load AMPS 45
Machine weight	3960 lbs