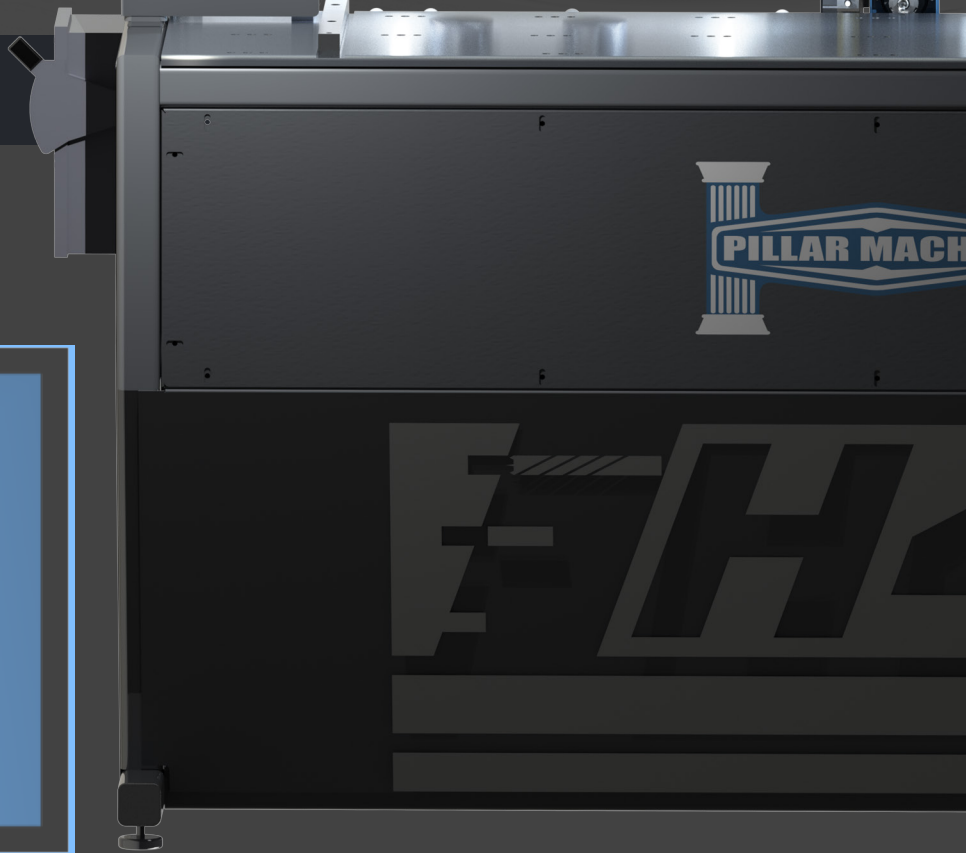
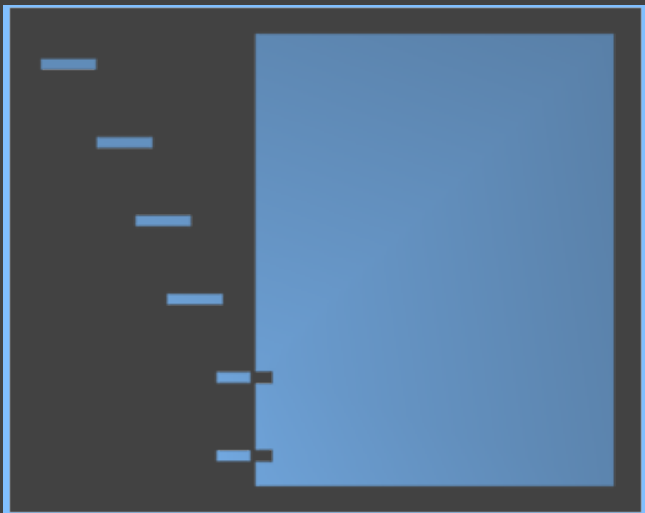




H49



**HORIZONTAL BORE &
DOWEL**



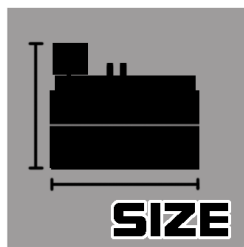
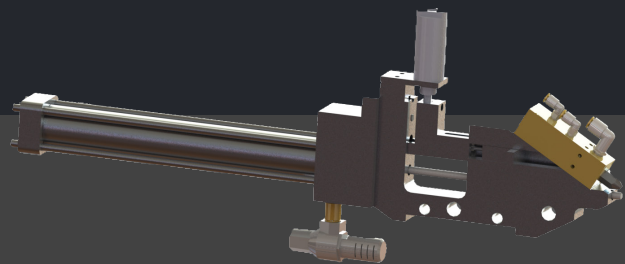
The H49 is a horizontal bore and dowel CNC machining center used for case construction in cabinet or furniture manufacturing. With the H49, you get quick and accurate assembly, gaining production times on CNC routers and point to points by shifting horizontal boring to this machine. It is designed to CNC position the spindle, bore a hole, then CNC position the inserter, inject glue or water, then insert a dowel into the hole. There are 2 working zones on the standard H49 model allowing for pendulum processing. While one part is being machined, the other zone can be loaded and queued for machining. All of this is done during a cycle time of less than one second. The H49 has a 49" working table with 2 work zones.

Standard Features:

- CNC controlled X-Axis
- Digital Readout for Z-Axis
- 1 HP 18,000 RPM Direct Drive Spindle
- 49" Work Area
- 15" Color Touch Screen
- 8mm Dowel Inserter
- Sealed Glue System

Options:

- 96" Work Area
- Barcode Reader
- Dowel Length from 30mm to 35mm
- 6mm Dowel Inserter
- Larger capacity dowel bowl



SIZE

W x D x H

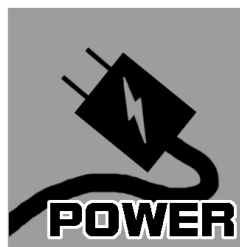
78 X 52 X 76



PSI

Air

90 - 110



POWER

Requirement

220 v 3 Ph



PORTS

Dust Collection

3" (1x)



CFM

Dust Collection

350