

BTRS

RETURN CONVEYORS FOR RIP SAWS



WHEN CUTTING COSTS BECOMES AN ISSUE

DOUCET
PRODUCTION MACHINERY
DIVISION

PERFORMANCE ORIENTED MANUFACTURING SOLUTIONS

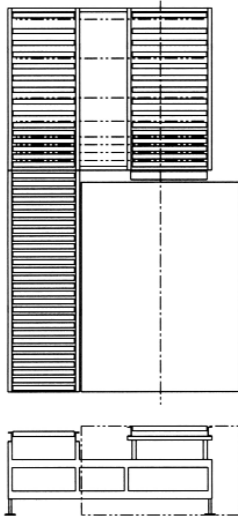
AND AUTOMATION TECHNOLOGY

OPERATING SPECIFICATIONS:

All models feature individually driven high quality PVC rollers, a receiving conveyor 5, 7, 9 or 12 feet long, a perpendicular belt transfer with a vertical movement (actuated by a pneumatic cylinder) and motorized return rollers of varying widths and lengths as specified below.

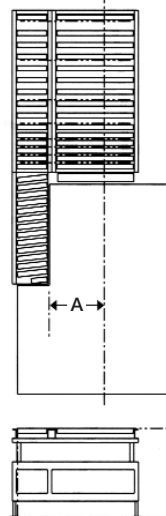
Upon detection of the end of board, the receiving rollers retract and the board is carried to the return rollers by the transfer belts. The receiving and return conveyor speed is adjustable 40 to 120 feet per minute. The belt transfer speed is fixed at 180 feet per minute. BTRS-70 features canted return rollers.

BTRS3-68



The **BTRS3-68** returns everything to the operator. The material arrives on the side of the rip saw table, two inches lower than the table height.

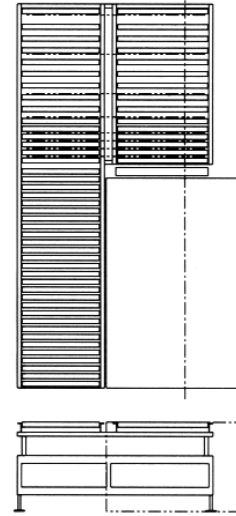
BTRS - 70



The **BTRS-70** returns everything to the operator onto the rip saw table at the same height as the table.

Modification of the rip saw table is required if distance "A" is longer than 18".

BTRS - 71



The **BTRS-71** returns everything to the operator, on the side of the rip saw table, at the same height as the table.

SPECIFICATIONS

	BTRS3-68	BTRS-70	BTRS-71
NUMBER OF OPERATORS	1	1	1
STD. LENGTH OF RECEIVING CONVEYOR	5 FEET	5 FEET	5 FEET
WIDTH OF RECEIVING CONVEYOR (BFR)	29 INCHES	30 INCHES	35 INCHES
WIDTH OF RETURN CONVEYOR (BFR)	24 INCHES	12 INCHES	30 INCHES
LENGTH OF RETURN CONVEYOR	11 FEET	8,5 FEET	12 FEET
BELT TRANSFER WIDTH	78 INCHES	42 INCHES	66 INCHES

DISTRIBUTED BY:

DOUCET
PRODUCTION MACHINERY
 DIVISION

340, 6th Street, Daveluyville, Quebec, Canada G0Z 1C0
 Phone: (819) 367-2633 • Fax: (819) 367-2100
 Toll Free: 1-866-6RETURN (673-8876)
 Email: info@doucetinc.com • www.doucetinc.com